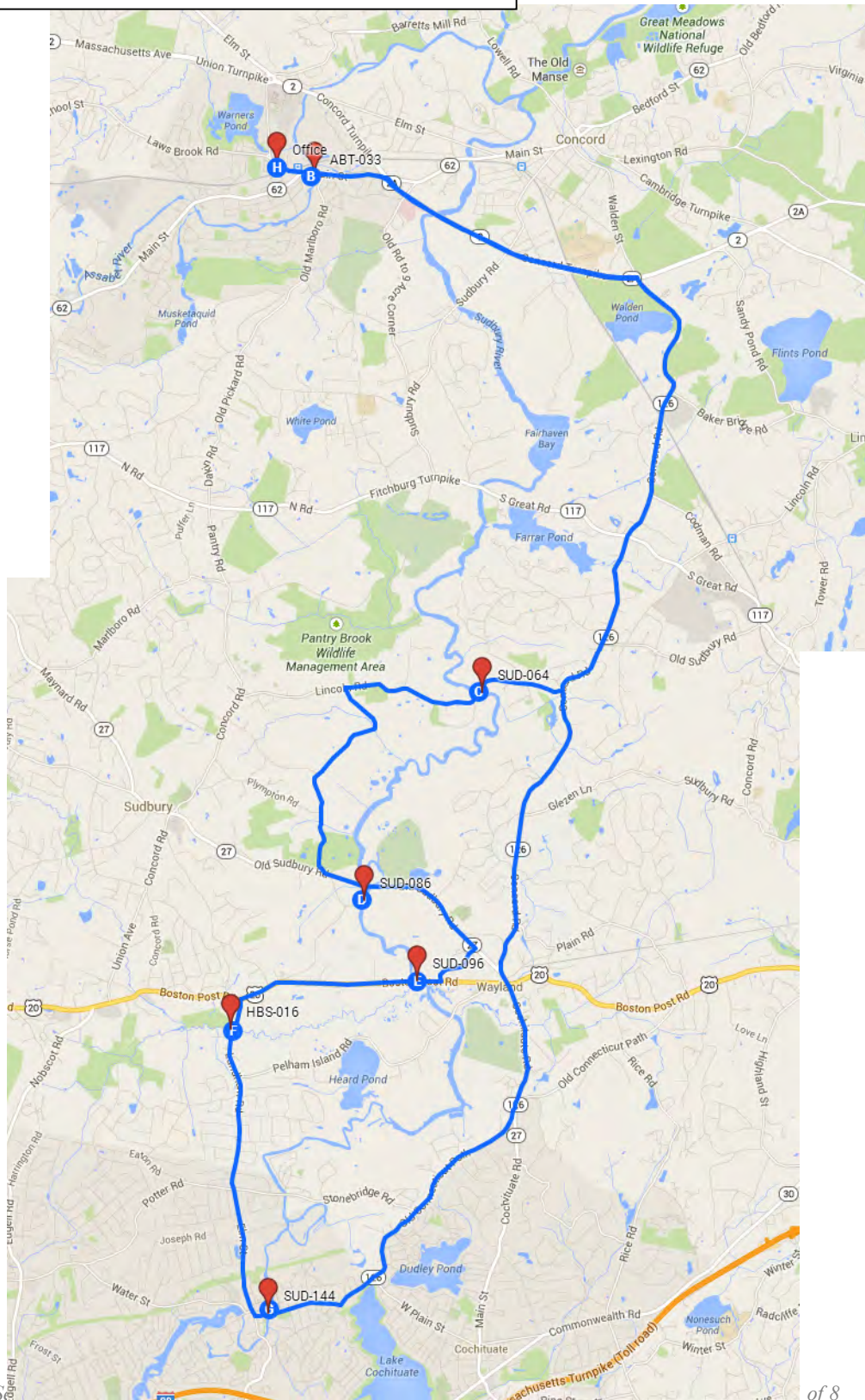


SUDBURY RIVER – MAY & SEPTEMBER

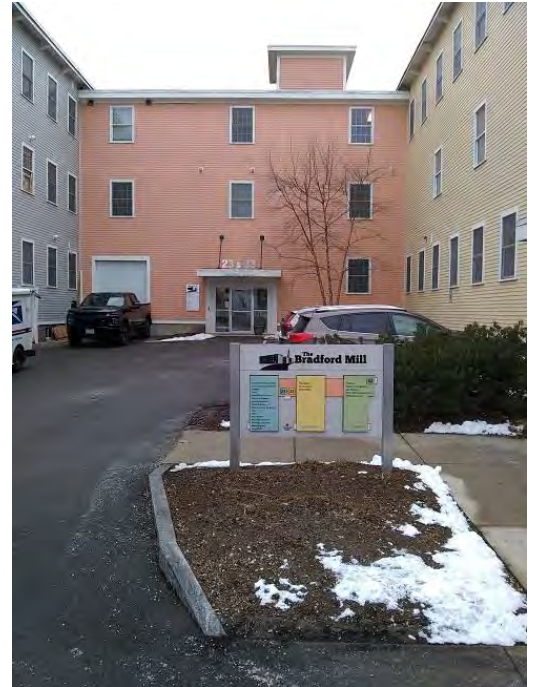
SITES (approx. street address for GPS):

1. SUD-064 (72 Sherman's Bridge Rd., Wayland)
2. SUD-086 (River Road and Rt. 27, Wayland)
3. SUD-096 (450 Boston Post Rd., Wayland)
4. HBS-016 (230 Landham Road, Sudbury)
5. SUD-144 (3 Sudbury Landing, Framingham)



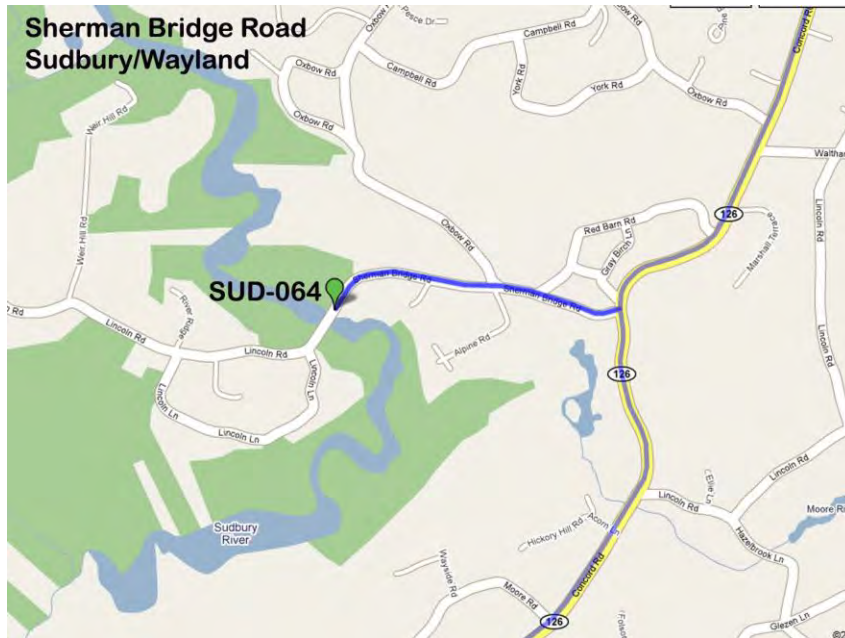
Office

OARS Office: 23 Bradford Street 3rd Floor, West Concord
From Rt. 2, take Rt. 62 west towards West Concord. At the fork (facing the 99 Restaurant), bear right onto Commonwealth Ave. Cross the railroad tracks and take a left onto Bradford Street. Turn in to the parking lot in between buildings #23 and #33 and park near the front. We use the main entrance and elevators. Our office is on the 3rd floor.



SUD-064 Sherman Bridge Road, Sudbury/Wayland line

From OARS office, go east on Rte 62 to Rte 2. Turn right (east) on Rte 2. Go 2.2 east on Rte 2. Turn right onto Rte 126/Walden Street. Follow Rte 126 south 3.8 miles. Turn right on Sherman Bridge Road and go 0.7 miles to the bridge. Park on the upstream side, in the dirt pull out before you cross the bridge. Make sure you go far enough into the stream to get away from any sediment from the boat ramp.



Picture angle:



View upstream from Sherman Bridge



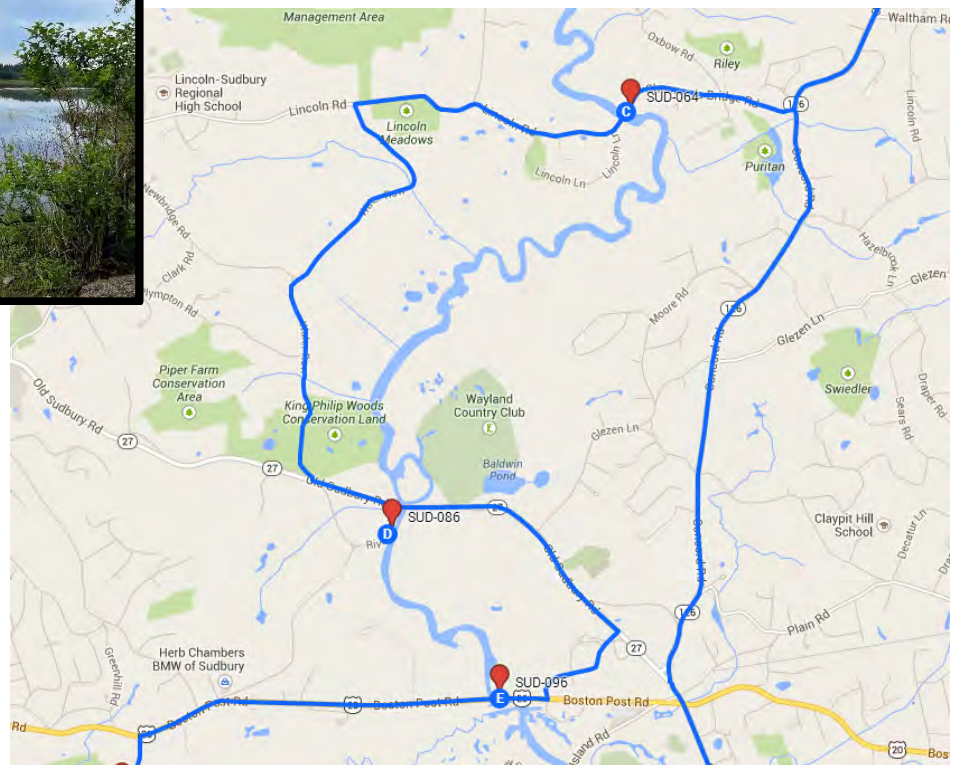
SUD-o86 River Road/Rte 27, Wayland

From SUD-064 continue 1.1 miles along Sherman Bridge Road (west) to Water Row. Turn left onto Water Row. Turn left onto Rte 27 and turn right onto River Road. Park in the dirt pullout almost immediately on the left. Sample at the informal boat access using the pole to reach into the main flow. This is Great Meadows National Wildlife Refuge land and we have permission to use it.

Boat access at River Road:

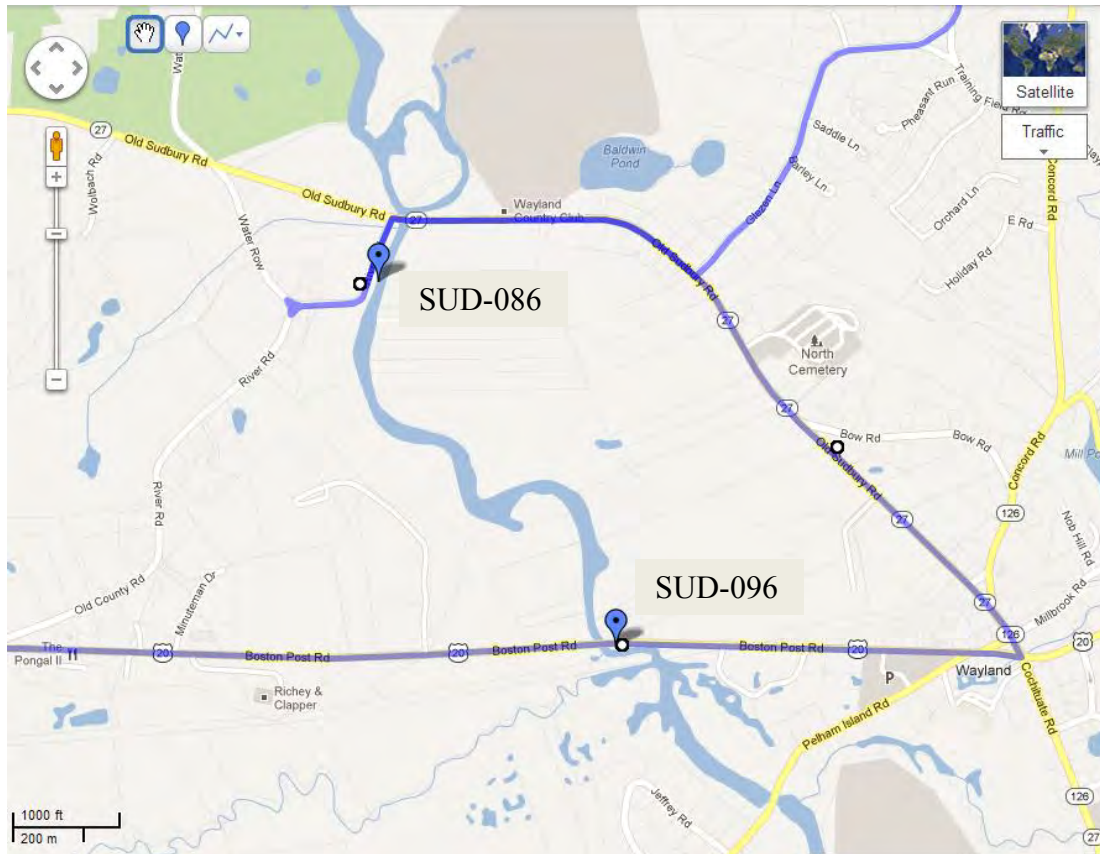


Picture angle:



SUD-096 Route 20, Wayland

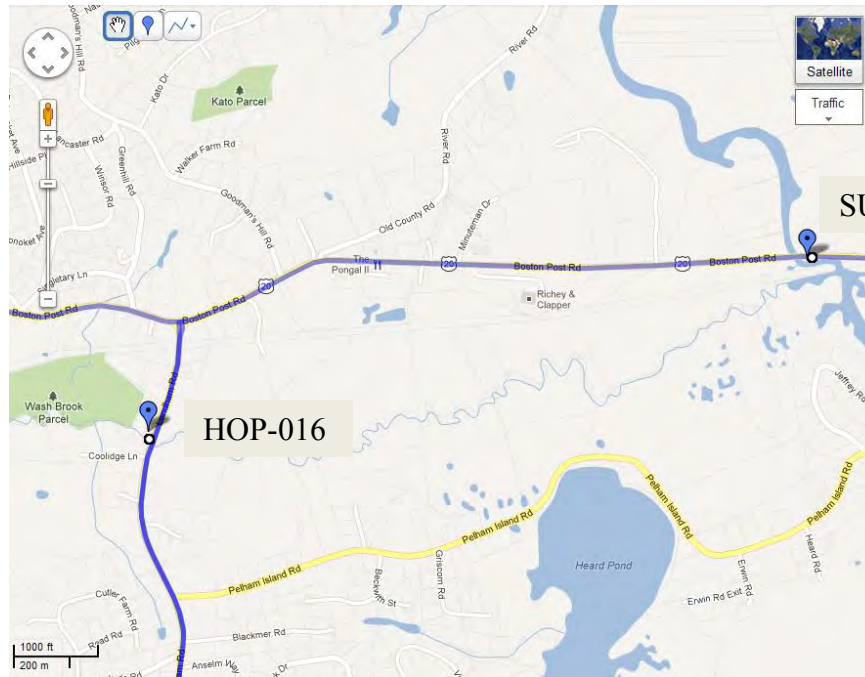
From SUD-086, continue along Rte 27. Turn right and go east 1.4 miles. Turn right onto Pelham Island Road just before Wayland Center. Turn right onto Rte 20, pull into the boat launch ramp just before the bridge over the river. Sample on the downstream side of the bridge. The bottom is relatively solid gravel/sand near the bridge.



Picture angle

HBS-016 Hop Brook at Landham Road, Sudbury

From SUD-096 continue west along Rte 20. Turn left onto Landham Road and go about 0.3 miles. Park in the pull-out on the left. Sample from the downstream side of the bridge using a sampling pole. The best access is right next to the left side of the bridge, but it is best to sample directly from the bridge with the pole.



SUD-096

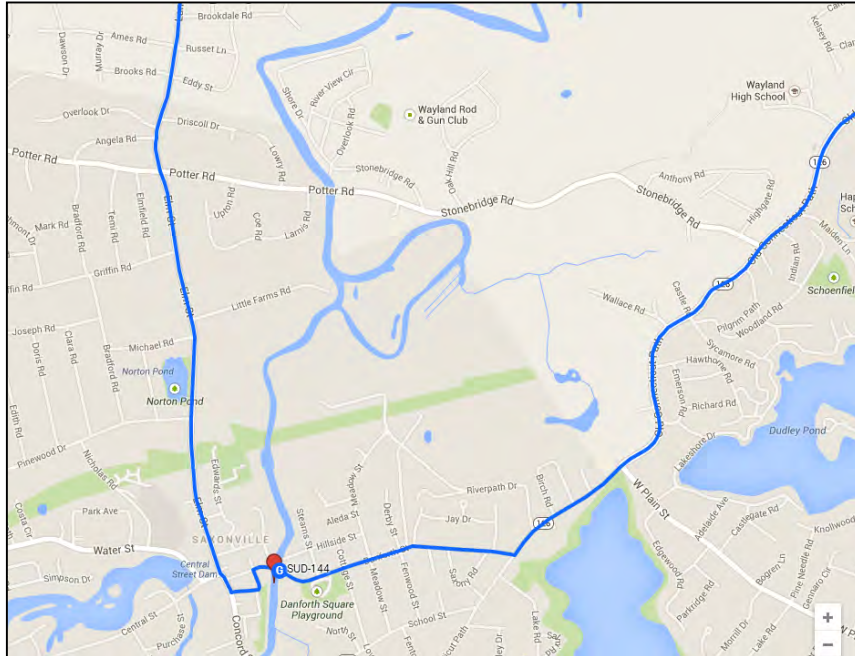
Picture angle:



It's best to stand on the concrete lip of the bridge for sampling and meter reading.

SUD-144 Sudbury Landing/USGS gage, Framingham

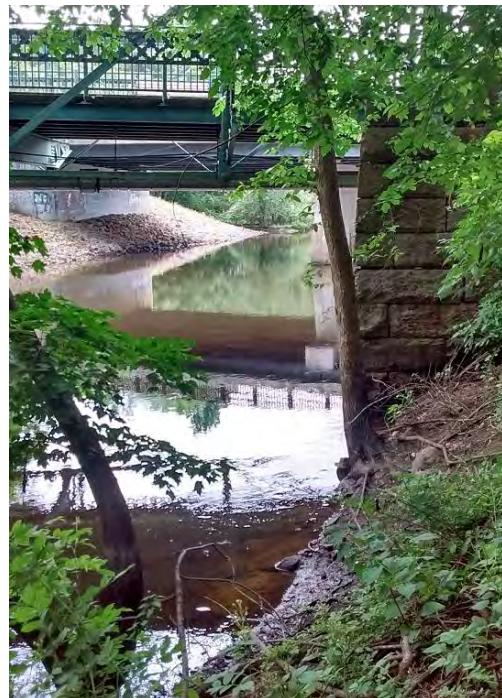
From HBS-016 continue south on Landham Road for about 1.2 miles. Landham Rd. turns into Elm St. Go straight through the light at Danforth Ct. and take a left onto Mechanic Street (by the Subway shop) and follow it around to Danforth St. Take a right onto Danforth St. and turn left onto Sudbury Landing and park on the roadside. Climb down embankment next to the walking-bridge and sample just downstream of the walking-bridge. There is an online USGS gage on the pier of the new car bridge. **You do NOT need to record this gage.**



Picture angle:



View upstream under the walking bridge and Danforth St. bridge. Sampling site is just this side of the walking bridge.



Return to OARS Office, 23 Bradford Street, West Concord

From SUD-144 reverse direction and turn left on Danforth Street (a one-way street). Turn left onto Route 126 (Old Connecticut Path) and go north about 7 miles to Rt. 2. At about 2 miles, at the intersection of Old Connecticut Path and Cochituate Rd., turn left to stay on Rt. 126 and leave Old Connecticut Path. After another mile, in Wayland Center, bear right at the power lines to stay on Rt. 126 (Concord Rd.). At the intersection with Rt. 2, turn left to go west on Rt. 2. Turn left onto Rt. 62 to West Concord. Bear right at the 99 Restaurant onto Laws Brook Road. Turn left onto Bradford Street after crossing the railroad tracks.