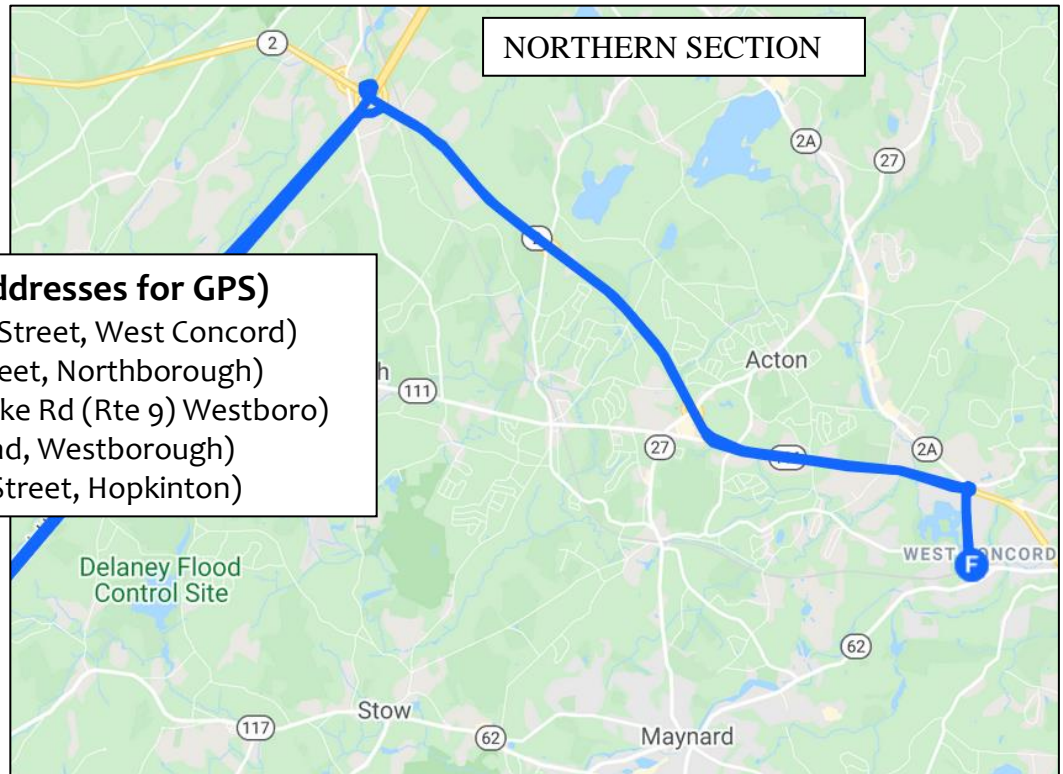


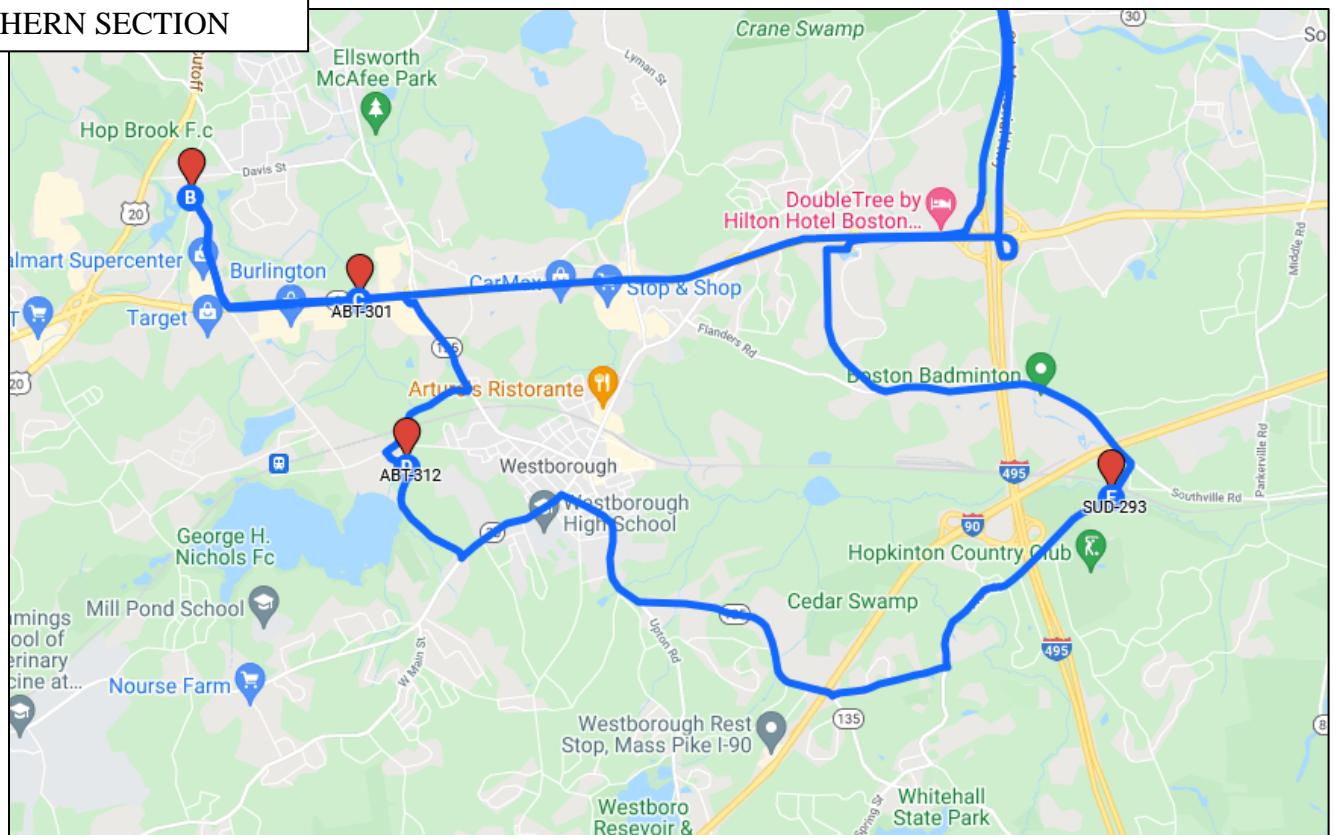
# UPPER ASSABET & SUDBURY – MAR-NOV



## SITES (Approximate Addresses for GPS)

1. Office (23 Bradford Street, West Concord)
2. HOP-011 (75 Otis Street, Northborough)
3. ABT-301 (285 Turnpike Rd (Rte 9) Westboro)
4. ABT-312 (48 Mill Road, Westborough)
5. SUD-293 (254 Fruit Street, Hopkinton)

## SOUTHERN SECTION



## Office

**OARS Office:** 23 Bradford Street 3<sup>rd</sup> Floor, West Concord  
From Rt. 2, take Rt. 62 west towards West Concord. At the fork (facing the 99 Restaurant), bear right onto Commonwealth Ave. Cross the railroad tracks and take a left onto Bradford Street. Turn in to the parking lot in between buildings #23 and #33 and park near the front. We use the main entrance and elevators. Our office is on the 3<sup>rd</sup> floor.





## HOP-011 Hop Brook at Otis St., Northborough

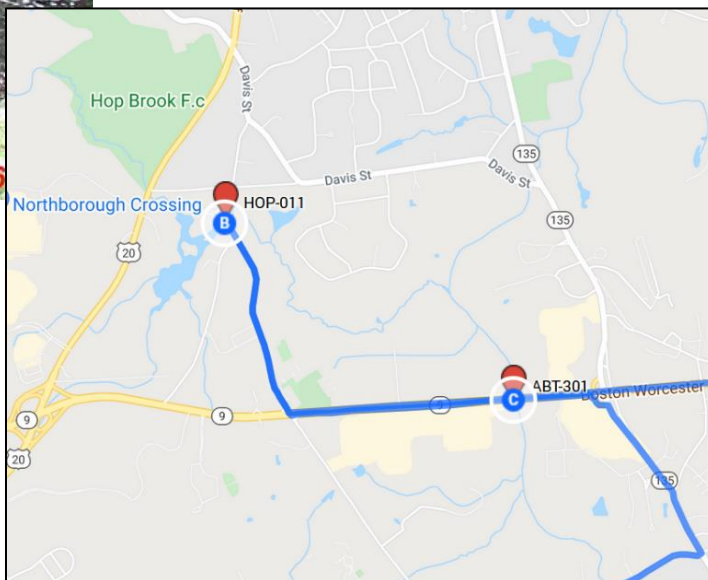
(Read Staff Gage)



From the OARS office, go out Bradford St. and turn left onto Commonwealth Ave. Bear right to stay on Commonwealth Ave. In 0.6 mi, at the traffic circle, take the 5th exit onto MA-2 W. In 7.3 mi, take exit 40A to merge onto I-495 S toward Marlboro/Worcester. In 18.3 mi, take exit 59B to merge onto MA-9 W toward Worcester. In 4.5 mi, turn right onto Otis St. In 0.4 miles, just before the bridge over Hop Brook (below Smith Pond), pull into the lot behind Armeno Coffee Roasters. The staff gage and sampling site are about 50 yds. downstream of the bridge along the rock wall. The hydraulic control for the gage is the rocky riffle just about even with the low section in the bank.



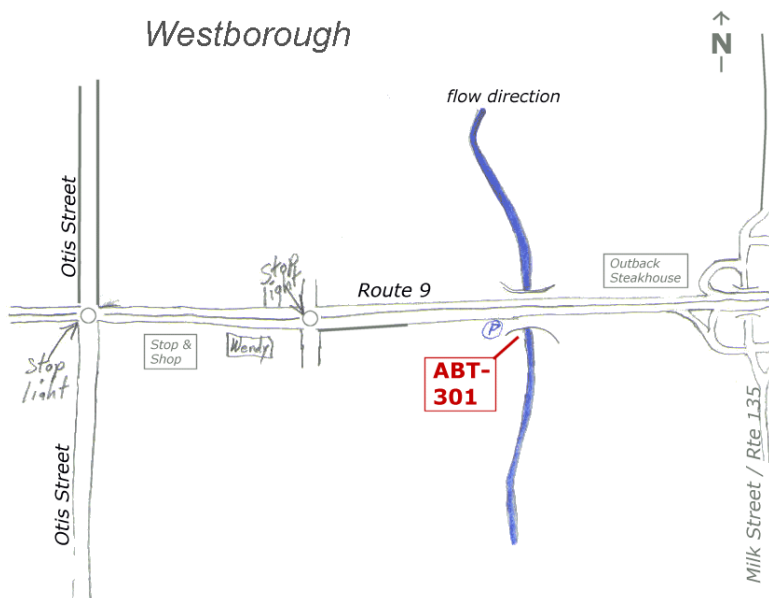
Picture angle:





## ABT-301 Assabet at Route 9 bridge, Westborough

From HOP-011 go south on Otis St. to Rte 9. Turn left onto Rte 9 East. Drive east about 0.8 mi. to the just before the bridge over the Assabet. Park at the edge of the parking lot near “R.G. Shakour” just before the bridge. Walk along the inside edge of the guardrail to close to the river and then down to the river through the brush. Sample from the river on the upstream side of the bridge. Meter readings can be done from the bridge. *This site is downstream from the Westborough WWTP.*



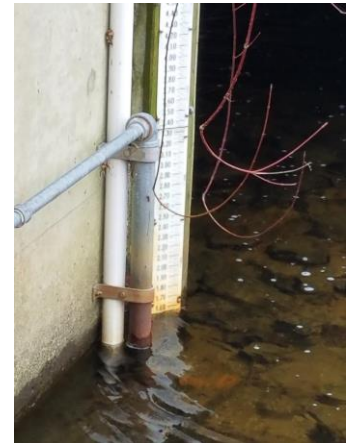
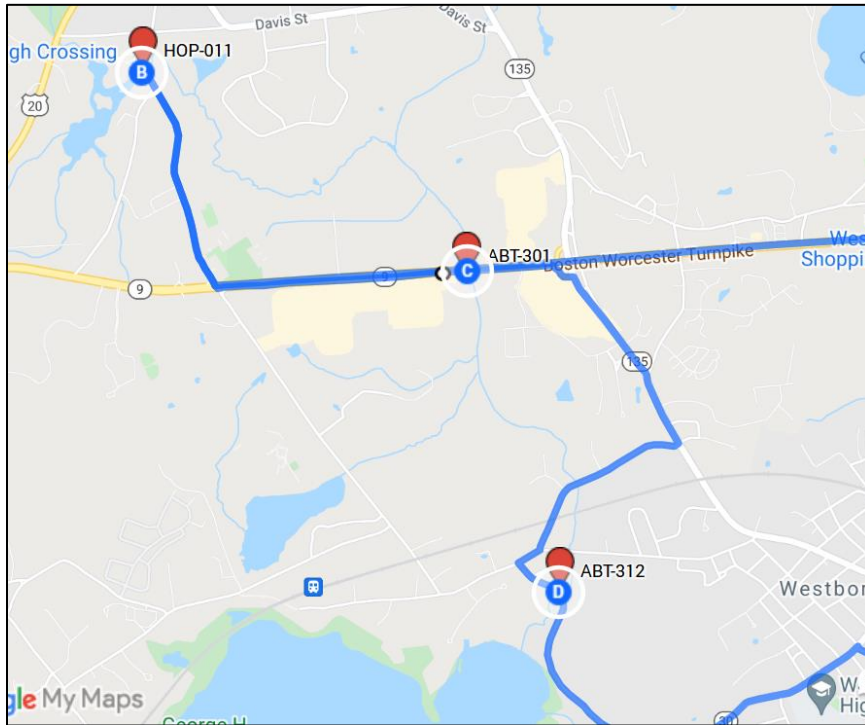
Picture angle:



## ABT-312 Assabet at Mill Road, Westborough

(Read Staff Gage)

From ABT-301, head east on Rt. 9. In 0.25 miles, take the Rt. 135 east exit. Turn right onto Rt. 135. In 0.6 miles, turn right onto Maynard St. In 0.6 miles, turn right onto Fisher St. In 400 ft., turn left onto Mill Rd. In 800 ft., park on the left just past the guardrail for the bridge over the Assabet. Park next to the mowed path leading into the woods. Walk down the path for 40 ft and then turn left to follow the road embankment to the river. The gage is on the downstream right bridge abutment. The sampling site is on the downstream side of the bridge.



Picture angle:

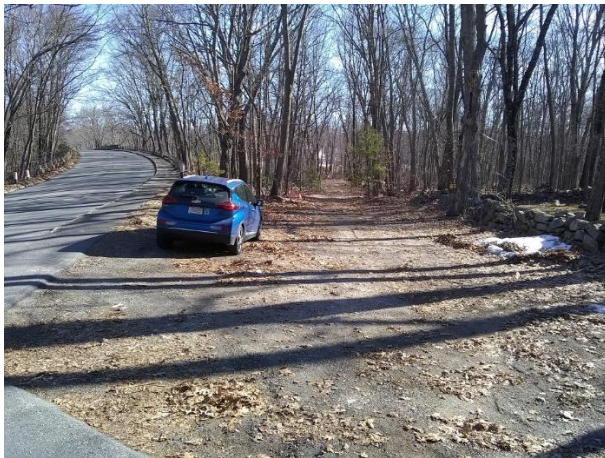
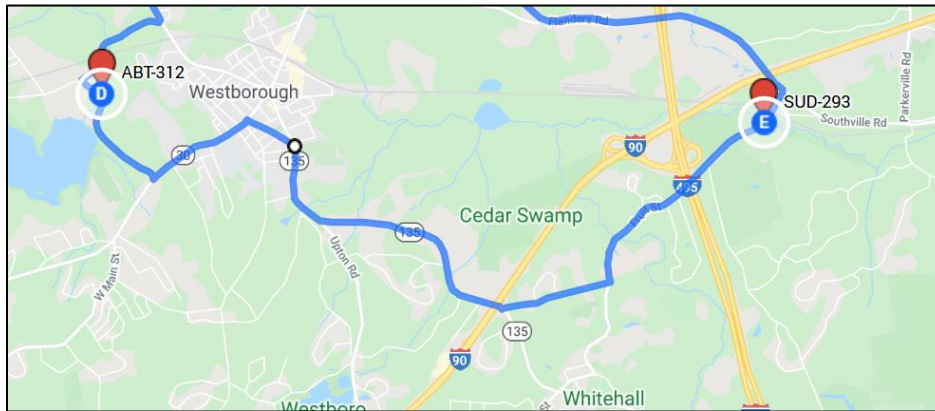




## SUD-293 Sudbury River at Fruit Street, Hopkinton

(Read Staff Gage)

From ABT-312, head southeast on Mill Rd. In 0.7 mi, turn left onto MA-30 E/W Main St. In 0.7 mi, turn right onto School St. In 0.3 mi, turn right onto MA-135 E/South St. In 1.9 mi, turn left onto North St. In 0.7 mi, turn left onto Fruit St. In 1.5 mi, just before the bridge, you can drive down the access road next to the gun club. From the end of the access road, walk left to sample just downstream of the bridge. Collect bottle samples and meter readings from the bank. The bridge is about to be repaired, so if there is construction in the way, you can sample farther downstream. The new staff gage is to the right attached to a stake. **Do not read the old gage attached to a tree.** The gun club has been asked, and they are okay with us using this access road to access the river.



Picture angle:



New staff gage:



## Return to OARS Office

From SUD-293, head northeast on Fruit St. In 1200 ft, turn left onto Flanders Rd. In 1.6 mi, continue straight onto Connector Rd. In 0.9 mi, turn right onto Research Dr. In 600 ft, turn left to merge onto MA-9 E. In 0.9 mi, merge onto I-495 N. In 18 mi, take exit 29A-B for Rt. 2 east. Follow Rt. 2 for 7 miles. At the traffic circle, take the 1st exit onto Commonwealth Ave. In 0.6 miles, turn left to stay on Commonwealth Ave, then right onto Bradford St.



Do not bring the samples upstairs! Let me know you're here and we'll check in the samples in the parking lot.